

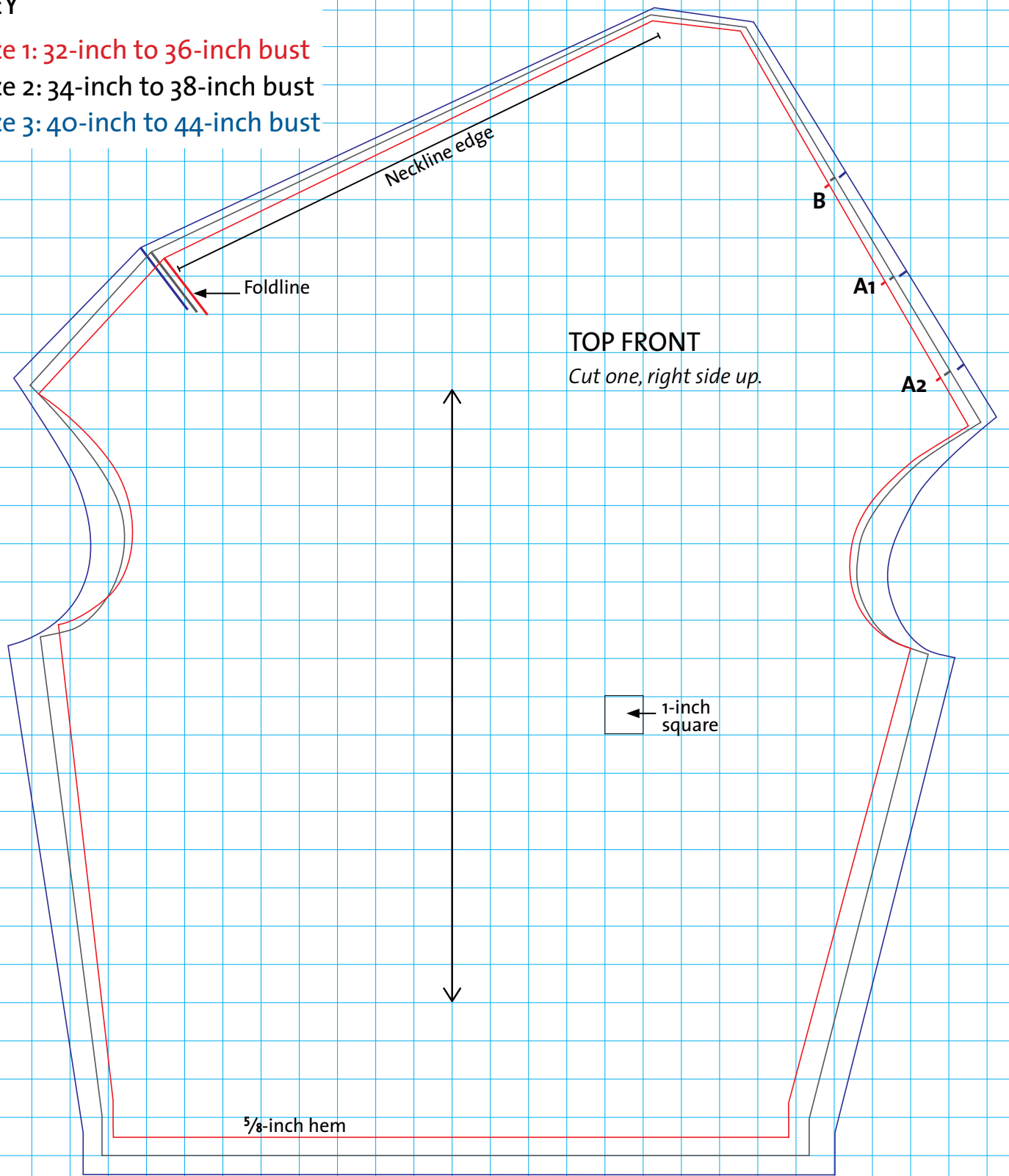
Twisted-Cowl Tank Pattern

KEY

Size 1: 32-inch to 36-inch bust

Size 2: 34-inch to 38-inch bust

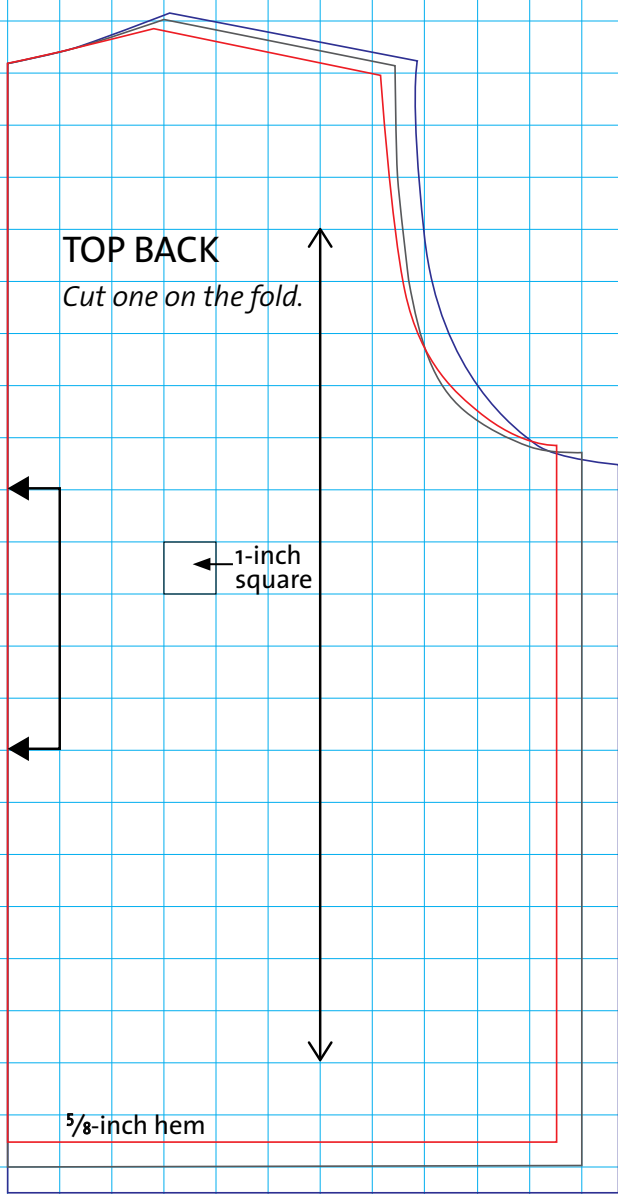
Size 3: 40-inch to 44-inch bust



Permission granted by Threads to copy and enlarge for personal use.

TOP BACK

Cut one on the fold.



TOP BACK FACING

Cut one on the fold.

