

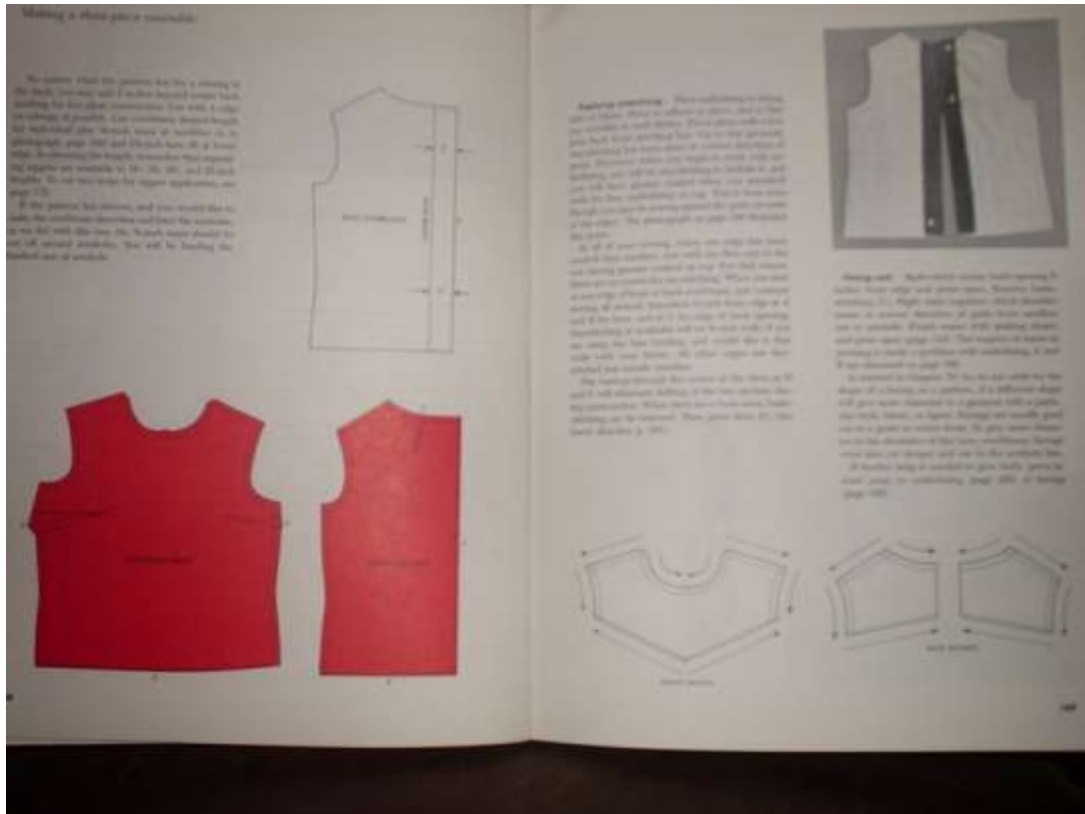
Bishop Method of Clothing Construction
Revised 1966
Edna Bryte Bishop
Marjorie Stotler Arch

an excerpt, pgs 168, 169

Applying underlining Place underlining to wrong side of fabric. Press to adhere in place, and to free any wrinkles in both fabrics. pin in place with a few pins back from stitching line. Up to this garment, staystitching has been done in correct direction of grain. However, when you begin to work with underlining, you will be staystitching to include it, and you will have greater control when you staystitch with the firm underlining on top. This is done even though you may be sewing against the grain on some of the edges. The photograph on page 190* illustrates this point.

In all of your sewing, when one edge has more control than another, sew with the firm one or the one having the greater control on top. For that reason, there are no arrows for staystitching. When you start at one edge of front or back overblouse, just continue sewing all around. Staystitch 1/4 inch from edge at A and B for hem, and at C for edge of back opening. Staystitching at armholes will be 5/8 inch wide, if you are using bias binding, and would like it that wide with your fabric. All other edges are staystitched just outside seamline.

The basting through the center of the darts at D and F will eliminate shifting of the two sections during construction. When darts have been sewn, bastestitching can be removed. Then, press darts,(E). (See lower sketches, p168.)



*(Pg 190 shows a picture of a fabric buckling in front of the presser foot as it is being sewn on to another piece of fabric.)

