

## PONCHO

Fabric required:

2 pieces fabric 14" x 27" (size 14). Illus. #1. Matching thread.

Tear, or pull thread and cut, the strips of fabric, using the selvage on one long side of each piece if at all possible.

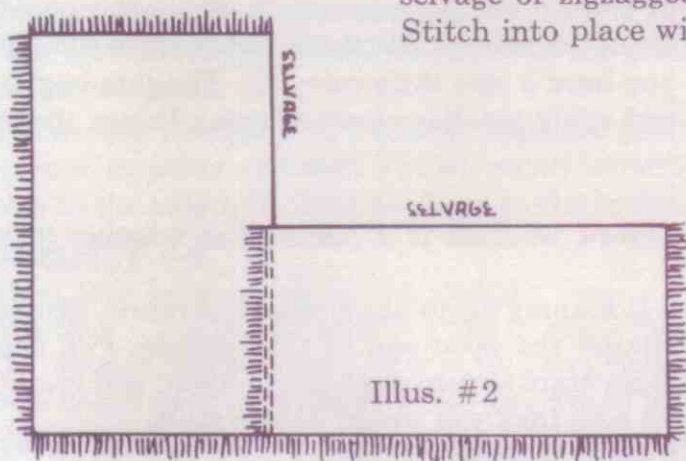
Fringe both the narrow edges and one long side of the torn pieces. Fringe should be  $\frac{1}{2}$ " to  $\frac{3}{4}$ " deep, depending on the fabric.

If the 4th side is not selvage, overcast or zigzag the edge to prevent raveling of the fabric. If fabric must be hemmed, make allowance when measuring and tearing or cutting fabric.

Place the narrow fringed edge of one piece of the fabric to the selvage or zigzagged edge of the second piece of fabric. (Illus. 2). Stitch into place with the sewing machine, using matching thread.

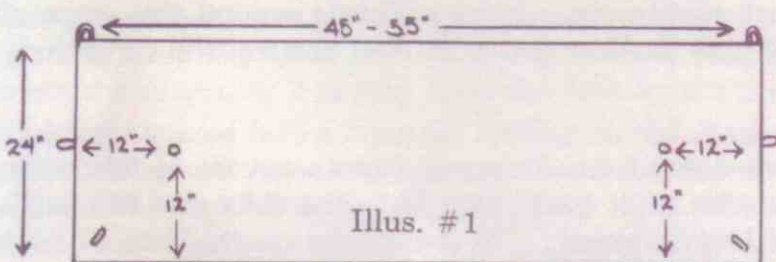
Repeat for the other end, matching the narrow fringed edge of one piece of the fabric to the other long selvage or zigzagged edge of the other piece of fabric. (See illustration on cover.)

This makes a nice cover-up for wear at the beach if made from towels of the same size (14" x 27") or of turkish toweling.



## STRAIGHT CAPE or MAGIC EVENING WRAP

Fabric may be wool . . . faille . . . velveteen . . . brocade . . . silk peau de soie . . . or any fabric desired. It can be a combination of fabrics, or both pieces may be the same.



You will need:

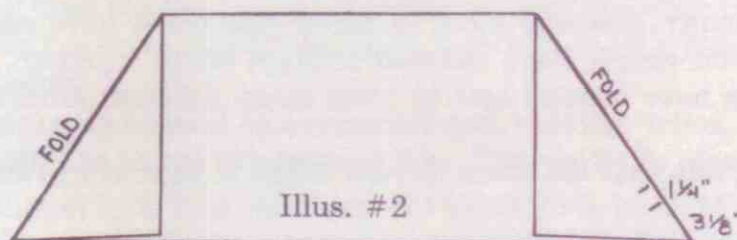
2 pieces of fabric 24" wide and 45" to 55" long.

Bias for buttonholes  $1\frac{1}{2}$ " x 5".

Bias for loops . . .  $\frac{3}{4}$ " wide x 9" long.

The length of the pieces will vary with the size of the person wearing the wrap, but the WIDTH of the wrap remains the same.

If bound buttonholes are to be made in the cuff, make them BEFORE stitching the two pieces of fabric together. Fold the narrow end of the fabric at right angles to the long side. (Illus. #2). Measure along the fold  $3\frac{1}{8}$ " from the point. Mark well. Make a  $1\frac{1}{4}$ " buttonhole at this mark.

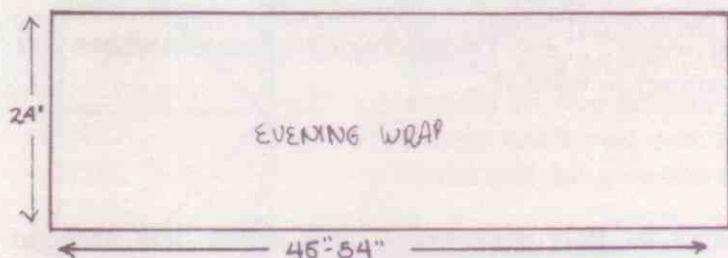


Repeat for both ends on both pieces of fabric. Check to see they match back to back, when fabric is placed together.

Place button-loops at both ends of one long side of one piece of the fabric, and at the halfway mark on the narrow ends of the fabric. A piece of cord . . .

## STRAIGHT CAPE or MAGIC EVENING WRAP (Cont'd)

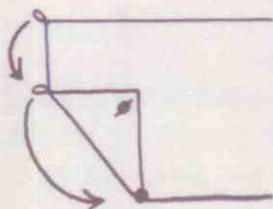
braid . . . or elastic may be used instead of the bias cord, depending on fabric used. (Illus. #3). Place right sides of the fabric together and stitch one long side of the fabrics together, keying the edges as you stitch. Press the seam open. Turn and top press, keeping the line of stitching on the edge of the wrap, so that colors do not show on the reverse side. Repeat for all edges, pressing each seam open, then turning rightsides out, and top-pressing. Be sure to keep a small area on one end so you can turn the fabric right side out, but make certain it does not come in the cuff area.



Illus. #3

Sew buttons into place, 12" from edge that does not have button loops. (Illus. #4).

Finish the bound buttonholes by slip-stitching them together, back to back. Sew buttons to wrap, one on each side of both cuffs if wrap is to be reversible.



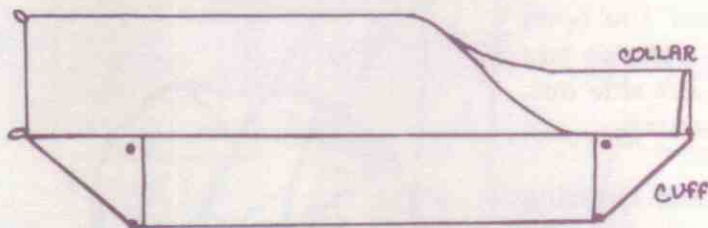
Illus. #4

Fold the wrap by bringing loop to loop and placing both loops over the small button, to form the collar. See illus. #5.

Cuff may be held in place with a novelty pin if so desired. Your fabric will determine whether buttonholes are practical in the wrap you are making.

This torn project makes a nice beach item when done in terrycloth. If made of terrycloth, you would need to pull a thread and cut along that line rather than tear the fabric.

Whether for party or beach wear, this wrap is a delightful addition to your wardrobe. (Illus. #6).



Illus. #5

Illus. #6

